



FREQ / Ch.:

Røssvoll AFIS: 119.950 APP: 127.900 Norway Control: 127.900

FATO ELEVATION

80'

FINAL APCH CRS

058°

MIN Alt. FAF/FAP

2300'

LNAV MDA(H)

660'(580')

LNAV/VNAV DA(H)

-

LPV DA(H)

-

MISSED APCH:

CLIMB TO RA401, TO RA408, TO RA409 CLIMBING TO 2800. RO RA404, TO RA405 CLIMBING TO 3000. TO EVONO CLIMBING TO 3600. PROCEED ON EITHER KY982 OR KY983. STATE INTENTIONS TO ATC.

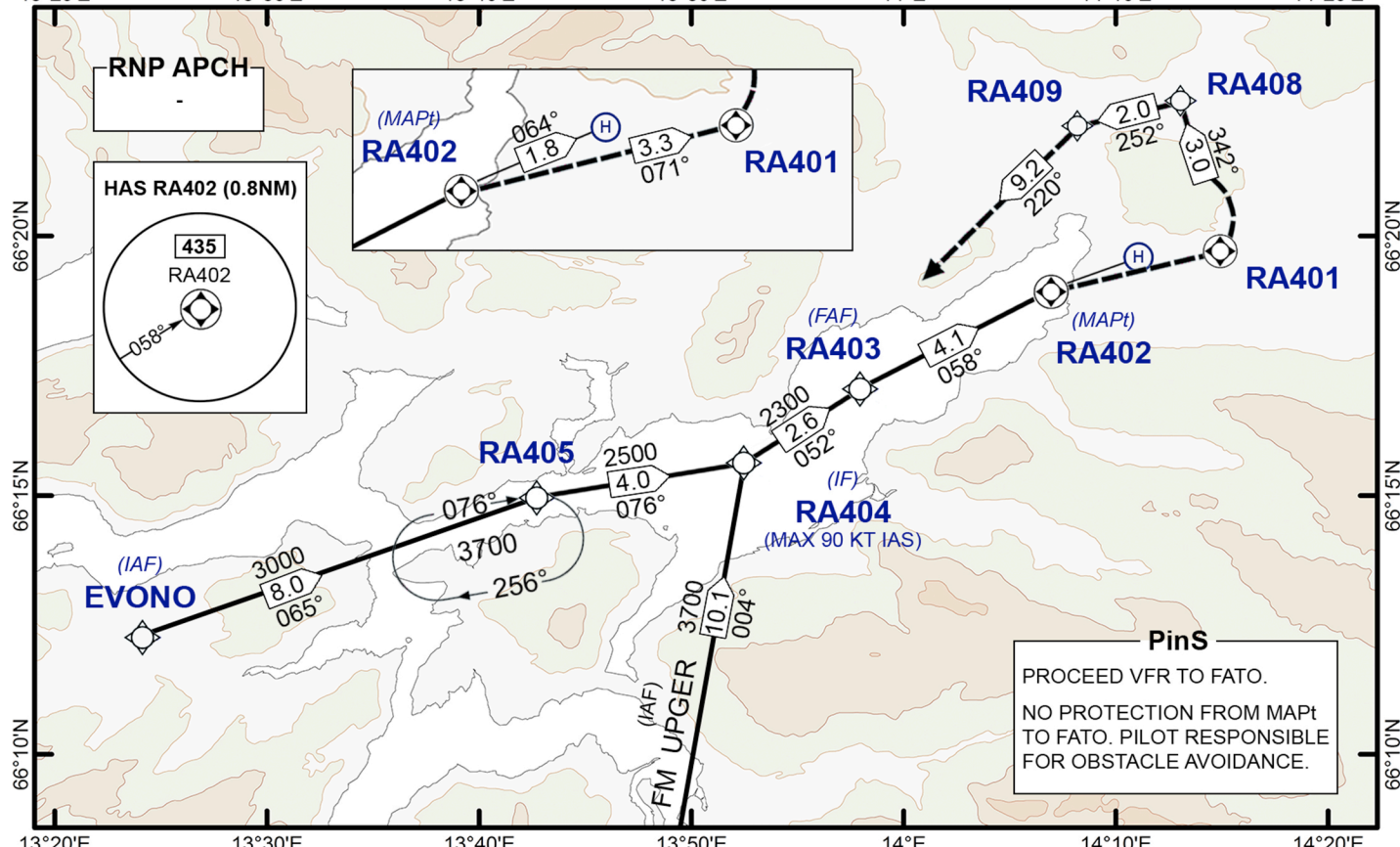
MAX 90 KT IAS DURING TURN.

RESTRICTIONS:

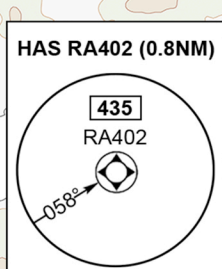
MSA NOT AVBL

BRIEFING STRIP

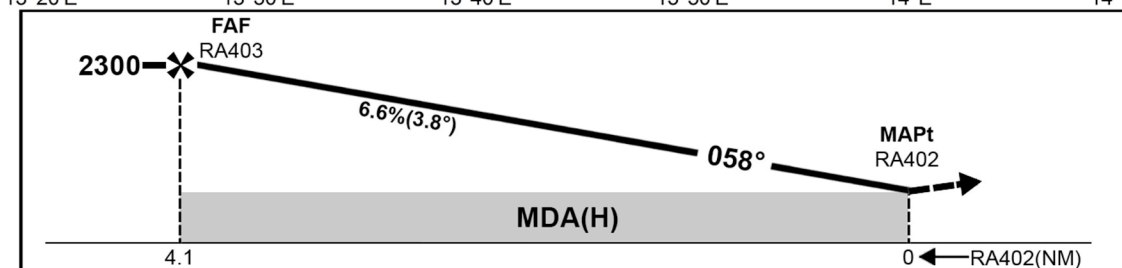
13°20'E 13°30'E 13°40'E 13°50'E 14°E 14°10'E 14°20'E



RNP APCH



**PinS**  
PROCEED VFR TO FATO.  
NO PROTECTION FROM MAPt TO FATO. PILOT RESPONSIBLE FOR OBSTACLE AVOIDANCE.



RECOMMENDED ALTITUDES	
DIST to MAPt	ALTITUDE
4 NM	2270'
3 NM	1860'
2 NM	1460'
1 NM	1060'

GND SPEED KT	70	90	100	120	130
ANGLE: 3.8°	471 FT/MIN	605 FT/MIN	672 FT/MIN	807 FT/MIN	874 FT/MIN

↑ TO RA401

LNAV MA climb gradient MNM 10.0%	LNAV MA climb gradient MNM 4.2%	-
MDA(H)	MDA(H)	-
H 660'(580')	1340'(1260')	-

CIRCLE-TO-LAND  
MDA(H)  
-

NOTE: